

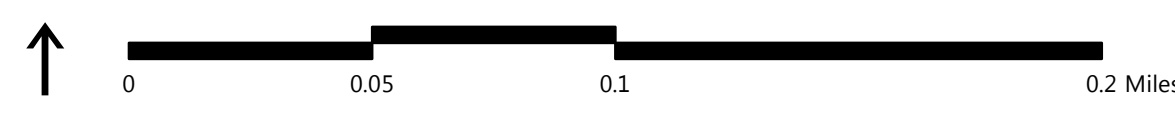
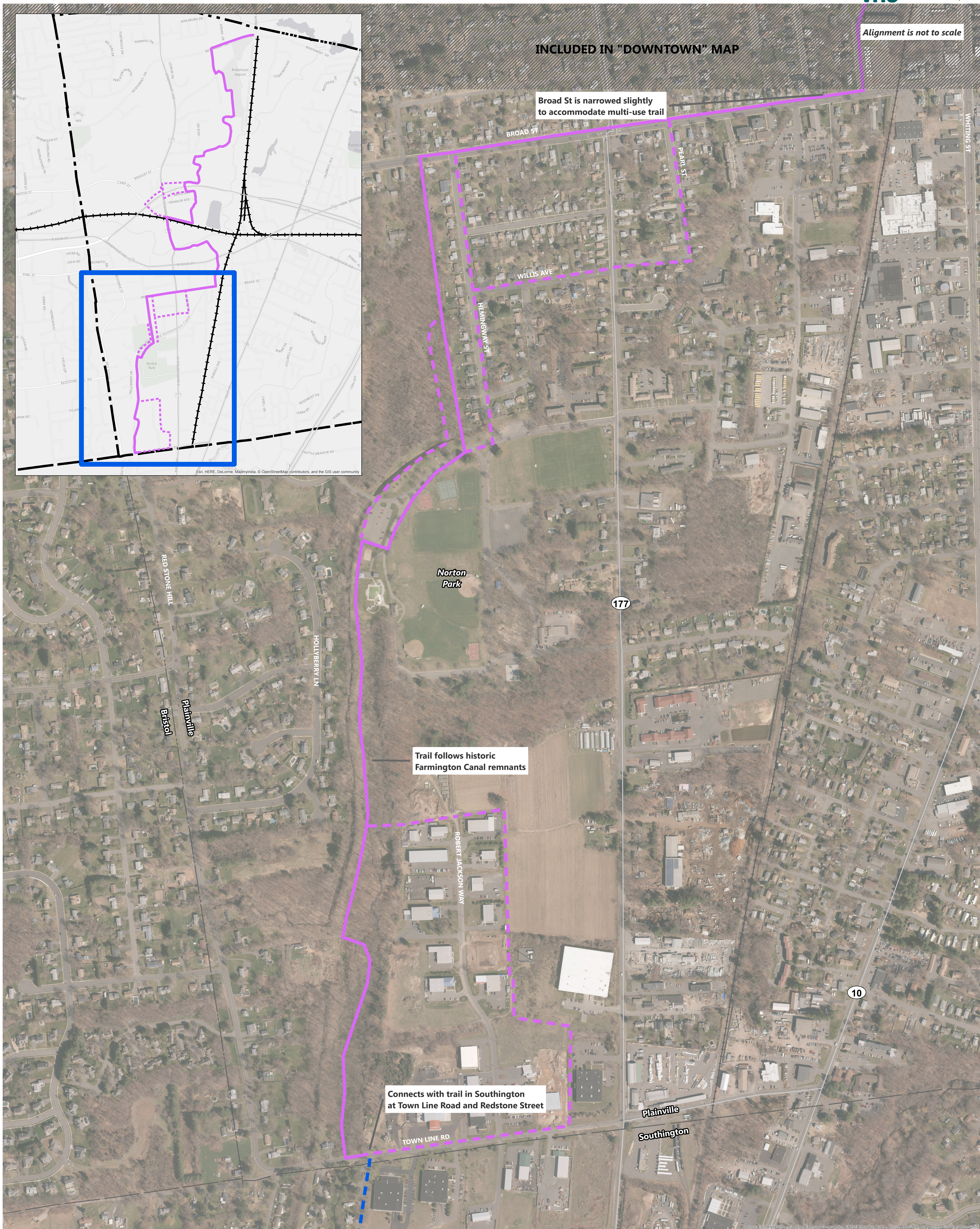
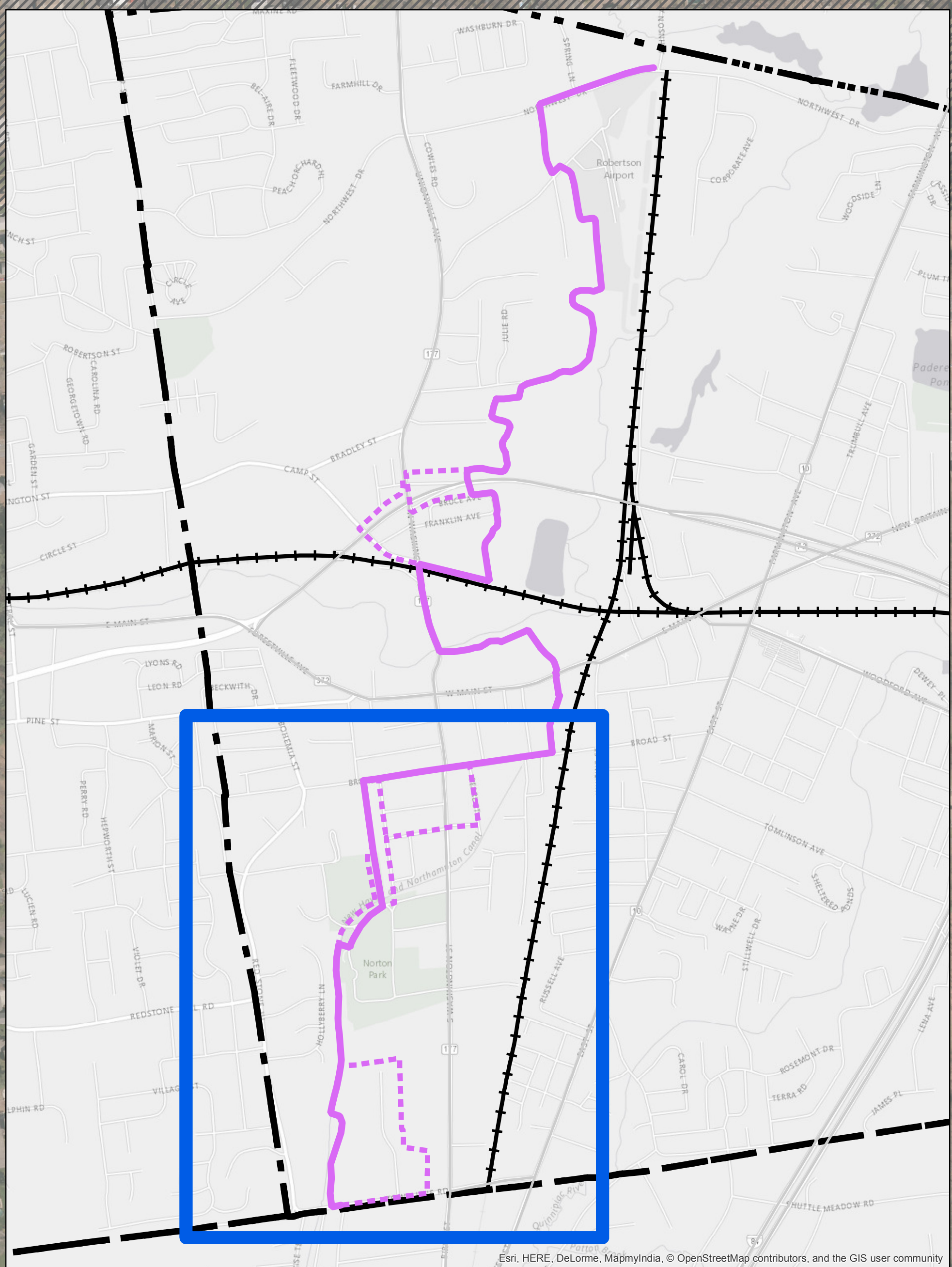
Alignment is not to scale

INCLUDED IN "DOWNTOWN" MAP

Broad St is narrowed slightly to accommodate multi-use trail

Trail follows historic Farmington Canal remnants

Connects with trail in Southington at Town Line Road and Redstone Street



- Town Boundary
- Active Rail
- Robertson Airport
- Alignment C - 5.3 Miles - 98% Multi-Use
- Potential Alternates
- Farmington Canal Heritage Trail, under construction/design

Disclaimers: The alignment shown is preliminary and not to scale. It is for planning purposes only. Alignments are subject to change as the planning study progresses. Labels represent potential options for the trail, should it be built. They do not represent a final design and are subject to change during the design process.

Gap Closure Study

Hartford County, CT

Project Statistics

Alignment C is a proposed:
 - 5.3 miles long,
 - 10-12' wide,
 - bituminous,
 - 98% multi-use.

Alignment C - 5.3 Miles | South Section

Source Information: Map and Geographic Information Center - University of Connecticut, US Census Bureau
 Service Layer Credits: Esri, DigitalGlobe, GeoEye, Earthstar Geographics, CNES/Airbus DS, USDA, USGS, AeroGRID, IGN, HERE, DeLorme, MapmyIndia, © OpenStreetMap contributors, and the GIS user community